

Solid Edge Requirements Management

Take control of your data, including your requirements

Benefits

- Organize inputs for mechanical design
- Easily assess design and requirements changes
- Demonstrate contract fulfillment
- Meet compliance and quality standards

Summary

The ability to accurately record, maintain and track key principles in the product design and manufacturing process is crucial for meeting quality standards. Solid Edge Requirements Management provides a full array of traceability benefits to support project managers from start to finish. With Solid Edge Requirements Management, users can easily and instantly search and interact with work items and tasks. Requirements Management is seamlessly integrated with Solid Edge, enabling you to work directly with your Solid Edge parts and assemblies while simultaneously managing the project requirements.

Features

Solid Edge Requirements Management is a powerful solution with many project management tools and features that save time and help to reduce costly mistakes. Solid Edge Requirements Management offers instant access to

product requirements, ID task tagging, interactive workflows and easy communication with management and executives. Requirements Management administrators and project managers can provide specific permissions like commenting and approval rights to further manage project interactions. Solid Edge Requirements Management also offers security features such as role- and credential-based authentication. These features provide strict access guidelines for an optimal project workflow.

Solid Edge Requirements Management is an add-on product for Solid Edge Design. You must currently be running a Solid Edge base license to be eligible for adding Solid Edge Requirements Management.

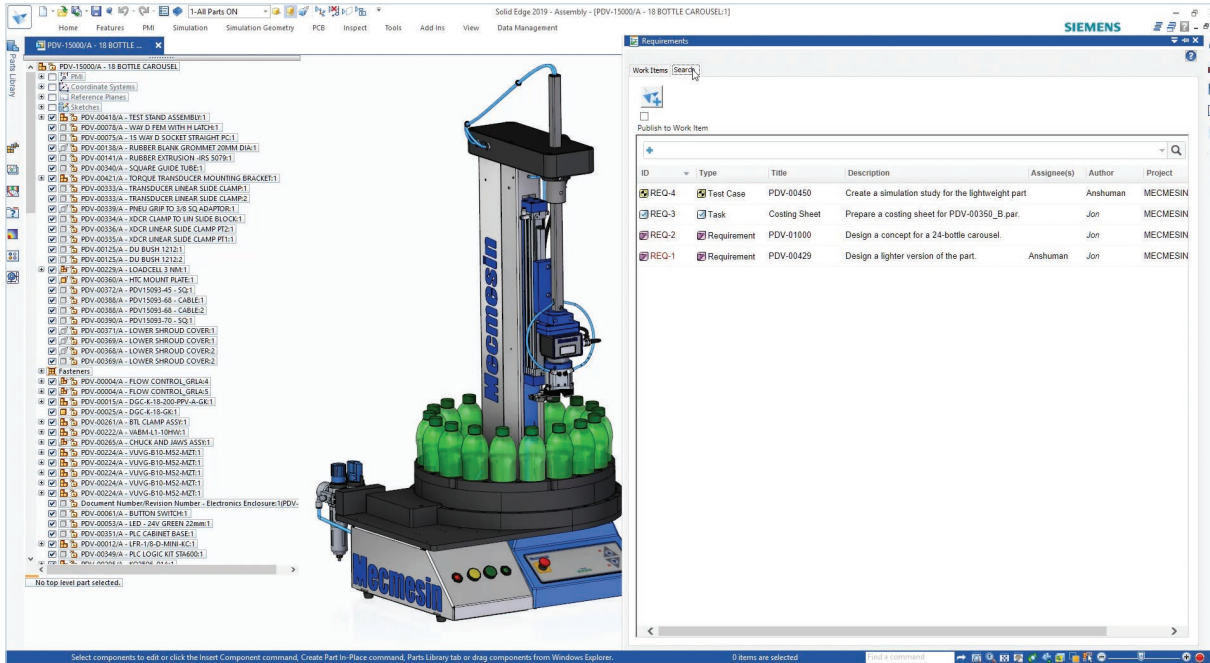
Scalable for future needs

Solid Edge Requirements Management is fully scalable to Polarion Requirements™ software for managing complex software systems and fully upgradable to other Polarion products such as Polarion ALM™ and Polarion QA™.

Extending value

Solid Edge is a portfolio of affordable, easy to deploy, maintain, and use software tools that advance all aspects of the product development process – mechanical and electrical design, simulation, manufacturing, technical documentation, data management, and cloud-based collaboration.

Solid Edge Requirements Management



Solid Edge Requirements Management software checks weight and material requirements for a specific part in the assembly.

Recommended system requirements

- 64-bit Windows 10 operating system
- 8 GB RAM or more
- True color (32-bit) or 16 million colors (24-bit)
- Screen resolution: 1280 x 1024 or higher, widescreen format

Minimum system configuration

- Any of the above 64-bit operating systems
- 4 GB RAM or more
- 65K colors
- Screen resolution: 1280 x 1024 or higher
- 10.0 GB of disk space is required to install Solid Edge

Server hardware requirements

- Microsoft Windows Server 2012 (or any update release), or Microsoft Windows Server 2016 (or any update release)
- 64-bit operating system
- Minimum RAM: 4 gigabytes; recommended: 8 gigabytes or more
- Minimum disk space: 10 GB; recommended: 40 GB or more
- Client/server connection: not less than 1 Mbit/sec
- Microsoft Windows 8.1 or 10 is supported for evaluation purposes

Siemens PLM Software
www.siemens.com/plm

Americas +1 314 264 8499
 Europe +44 (0) 1276 413200
 Asia-Pacific +852 2230 3308

© 2018 Siemens Product Lifecycle Management Software Inc. Siemens, the Siemens logo and SIMATIC IT are registered trademarks of Siemens AG. Camstar, D-Cubed, Femap, Fibersim, Geolus, GO PLM, I-deas, JT, NX, Parasolid, Solid Edge, Syncrofit, Teamcenter and Tecnomatix are trademarks or registered trademarks of Siemens Product Lifecycle Management Software Inc. or its subsidiaries in the United States and in other countries. All other trademarks, registered trademarks or service marks belong to their respective holders.
 70876-A2 6/18 C